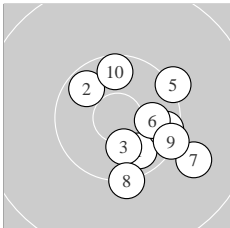
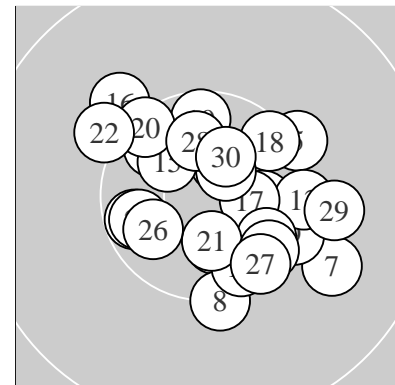
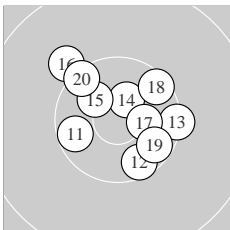


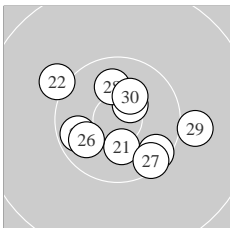
Ergebnis: **299** (311.0)
 Serien: 99 100 100
 Zaehler: 29 1 0 0 0 0 Innenzehner: 13
 weiteste: 19.41 (7.) , 17.42 (29.) , 16.93 (16.)
 beste Teiler 435.8 (25.) 487.4 (14.) 594.0 (30.)
 Trefferlage 2.62 mm rechts, 0.34 mm tief
 Streuwert 7.80, horizontal: 8.46, vertikal: 7.08



Serie 1:
 10.5 * 10.4 * 10.6 * 10.3 → 10.1 ↗
 10.5 * 9.9 ↘ 10.2 ↓ 10.2 → 10.4 ↑
 beste Teiler 661.3 (3.) 776.3 (6.) 880.3 (1.)
 Trefferlage 6.05 mm rechts, 2.14 mm tief
 Streuwert 7.62, horizontal: 7.24, vertikal: 7.97



Serie 2:
 10.4 ← 10.4 ↓ 10.2 → 10.7 * 10.6 *
 10.0 ↖ 10.6 * 10.3 ↗ 10.4 ↘ 10.3 ↖
 beste Teiler 487.4 (14.) 599.7 (17.) 679.6 (15.)
 Trefferlage 0.89 mm rechts, 1.87 mm hoch
 Streuwert 7.87, horizontal: 8.70, vertikal: 6.93



Serie 3:
 10.6 * 10.1 ↖ 10.4 * 10.3 ↘ 10.7 *
 10.5 * 10.3 ↘ 10.5 * 10.0 → 10.6 *
 beste Teiler 435.8 (25.) 594.0 (30.) 609.6 (21.)
 Trefferlage 0.92 mm rechts, 0.75 mm tief
 Streuwert 7.86, horizontal: 9.11, vertikal: 6.37